

Leading Health-care Systems: Strategy Into Practice

A collaboration between seven business schools
across Europe and EABIS



EABIS
European Academy
of Business in Society

www.eabis.org

Institute of Leadership &
Management in Health

www.swlacademicnetwork.ac.uk

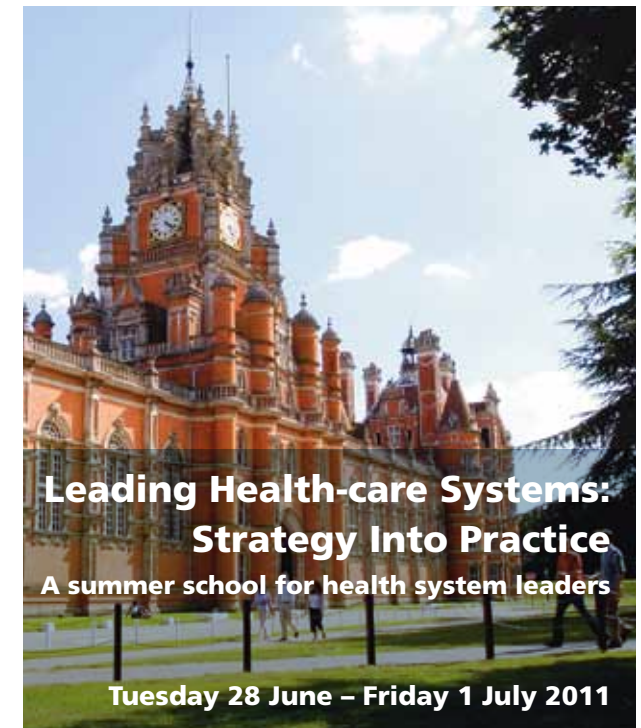


Royal Holloway, University of London
Egham, Surrey, TW20 0EX
T: 01784 434455
www.rhul.ac.uk



6070 6409

[www.rhul.ac.uk/management/events/
eventsarticles/2011-summer-school.aspx](http://www.rhul.ac.uk/management/events/eventsarticles/2011-summer-school.aspx)



Leading Health-care Systems: Strategy Into Practice

A summer school for health system leaders

Tuesday 28 June – Friday 1 July 2011

A collaboration between seven European business schools:
Bocconi, Milan, Italy
Copenhagen Business School, Denmark
Kingston Business School, UK
Manchester Business School, UK
School of Management, Royal Holloway,
University of London, UK
Toulouse Business School, France
Trinity College, Dublin, Ireland

In association with:
The Academy of Business in Society
The Institute of Leadership and Management in Health

Royal Holloway
University of London



What is the summer school?

The **Leading Health-care Systems** summer school is an innovative and intensive, interactive programme of presentations, visits and workshops concerned with health systems across Europe with a focus on the UK. It will allow participants to learn how key trends and challenges in health policy and management are being addressed in practice.

Reasons to attend:

1. International participants

- Opportunity to learn from each other through focused discussions and case study visits and sessions with academic faculty and guest speakers.
- Opportunity to network, share knowledge and experience with colleagues from across Europe.

2. Interactive programme

- Advance briefing material and case study material.
- Case study visits.
- Sessions will focus on key topics such as Clinical leadership, Patient Safety, Regulation, Consumerism, Choice, Transparency, and Productivity and Efficiency.

3. Visits to leading health-care organisations

- Visits will focus on key topics, with talks from and discussions with key officials within each organisation.
- National health ministry and regulators.
- Local commissioning and providing organisations.

4. Early bird registration for future programmes

- Opportunity to register for subsequent programmes with partner European business schools.

Who should attend?

- Clinicians and health-care managers with an interest in learning latest health-care developments and cross-national comparisons.
- Executives from health providers, pharmaceutical companies and other interested organisations, who are keen to observe health-care management in practice.
- Government policy makers and those interested in the strategic development of health-care services.
- Students and alumni from participating business schools.

Cost

- Students and Alumni of partner universities: £600.
- EABIS members: £1200.
- Others: £1800.

Includes:

- Meals, transport during the course, course materials.

Excludes:

- Travel to Royal Holloway.
- Accommodation. Can be arranged for approximately £60 a night on campus.

You can register and pay online:

www.rhul.ac.uk/management/events/eventsarticles/2011-summer-school.aspx

Programme

	Morning	Afternoon	Evening
Day 1 Tuesday 28 June	Registration and lunch	<ul style="list-style-type: none"> • Welcome and personal introductions (Prof. Edwards) • Current challenges of UK health system (Dr. Exworthy) • Briefing for case study visits • Keynote speaker: <i>Leading change in health systems</i> 	Welcome dinner at Royal Holloway, University of London
Day 2 Wednesday 29 June	Case study visits to 2 local health-care organisations		Networking event with local health-care leaders
Day 3 Thursday 30 June	Case study visits to central London: health ministry and central government health agencies		Free time to explore London
Day 4 Friday 1 July	<ul style="list-style-type: none"> • Keynote speaker: <i>Meeting the health-care challenges of the future</i> • Panel discussion and debate 	Departure after lunch	

Academic Coordinators

Professor Christine Edwards (Kingston Business School) and Dr. Mark Exworthy (School of Management, Royal Holloway, University of London)

For more information please contact

Laura Law
Department of Health & Social Care,
Royal Holloway, University of London
Egham, Surrey, UK
TW20 0EX

T: +44 (0)1784 276518
Laura.Law@rhul.ac.uk